

# South Indian River Water Control District

January 16, 2025  
Board of Supervisors Meeting



# Attention:

- Tonight's meeting is a **Board Meeting**.
- The items for discussion are numbered on the **Agenda**.
- Please use **your name** for the record when joining the meeting.
- **On Zoom, everyone will be muted, and video turned off during the meeting.**
- Landowners were requested to provide comments in writing and requests to speak prior to the meeting. The comments will be heard during the **Landowners' Items**, and you will be allowed **3 minutes** on each item of the agenda you wish to speak about.
- If you did not notify the District prior to the meeting of your desire to speak, you will be muted for the entire meeting.
- **Thank you for your patience!**

# 1. Pledge of Allegiance



## 2. Consent Agenda

**A. Approval of the Minutes of the Previous Meeting**

**B. Approval of Warrant List**

**Board Discussion**

**Motion from the Board**

## 3. Landowners' Items

### Landowners' Comments



# 4. Public Information Report



Presented by  
Donna J. DeNinno  
Public Information Officer

## 4. Public Information Report (2)



**A. Policies and Procedures Manual**

**B. Landowners' Family Day**

# 5. Treasurer's Report



Presented by  
Charles Haas  
District Treasurer



# 6. Executive Director's Report



Presented by  
William 'Chad' Kennedy  
Executive Director

## **6. Executive Director's Report (2)**



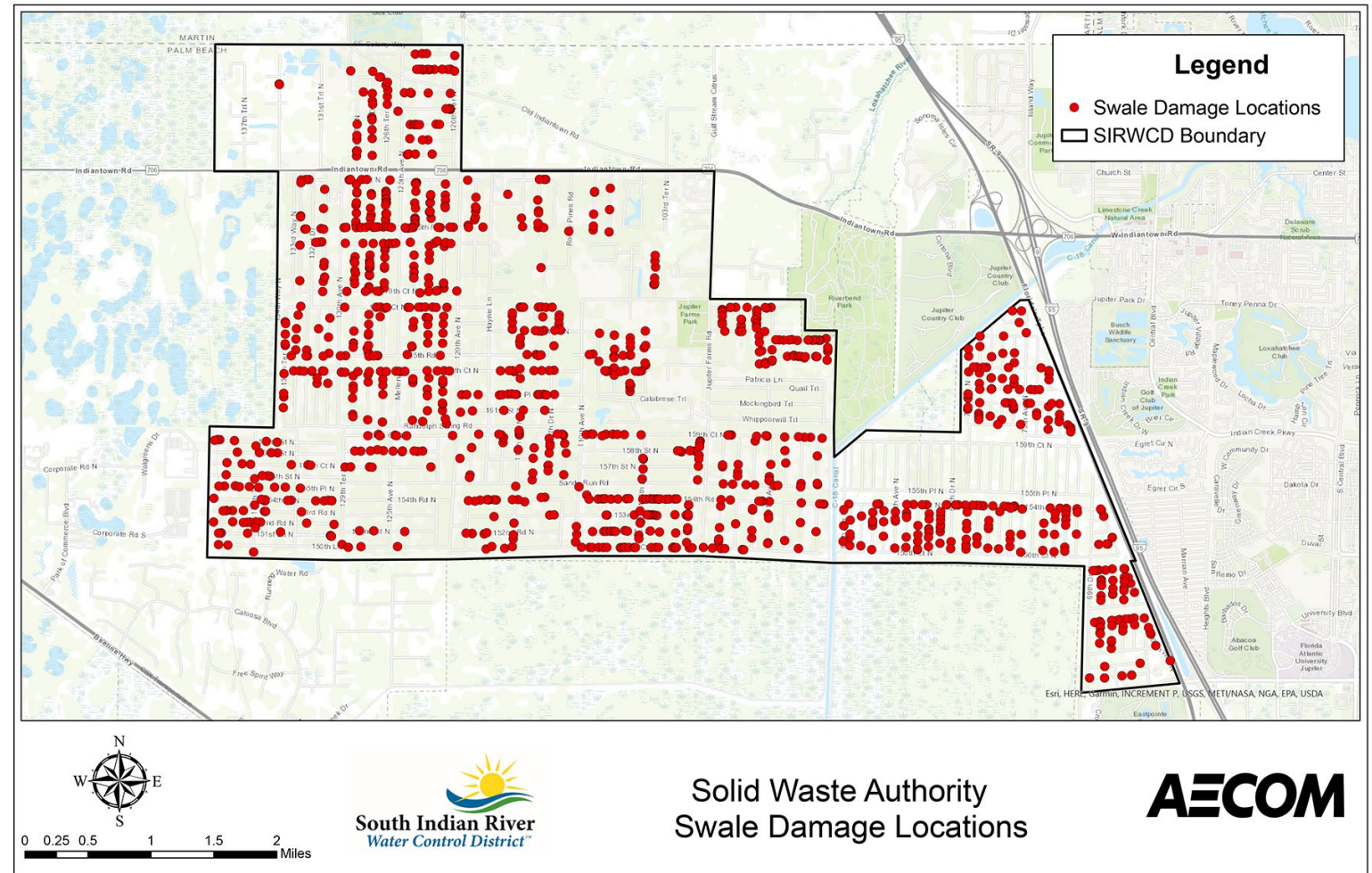
**A. Paving Petition Update**

**B. Natural Resources Conservation Service Storm Grant Update**

## 6. Executive Director's Report (3)

### C. District Map of Swale Damage from Solid Waste Authority

Palm Beach Country Estates – 263  
Jupiter Farms – 933  
Total – 1196



# 7. Supervisor of Operations Report



Presented by  
Dustin Fazio  
Supervisor of Operations



## 7. Supervisor of Operations Report (2)

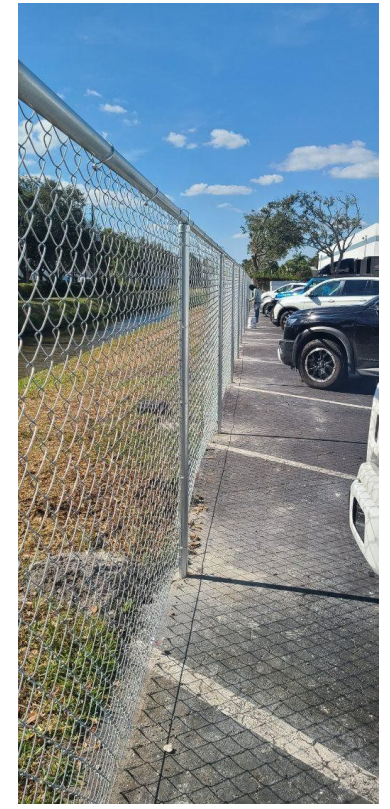
### A. Request for Board Approval of Surplus of International 4300 Dump Truck





## 7. Supervisor of Operations Report (3)

### B. Jupiter Park of Commerce Fence Installation



# 8. Engineer's Report



Presented by  
Karen D. Brandon, PE  
District Engineer



## 8. Engineer's Report (2)

### A. Palm Beach Country Estates Paving Petition Ballots

- Ballots for seven (7) roadway petitions were mailed out on December 13th
- The ballots were counted on January 13th
- The results are as follows:

## 8. Engineer's Report (3)

### **A. Palm Beach Country Estates Paving Petition Ballots Percentage of YES Votes:**

- 69th Trail North between 150th Place North and 154th Court North – 31%
- 77th Trail North between 155th Place North and 159th Court North – 28%
- 85th Way North between 155th Place North and 159th Court North – 11%
- 86th Way North between 155th Place North and 159th Court North – 39%
- 87th Trail North between 155th Place North and 159th Court North – 28%
- 88th Trail N between 155th Place North and 159th Court North – 47%
- 154th Court North between 69th Drive North and 69th Trail North – 0%

Note: 90% YES votes required to pass

## 8. Engineer's Report (4)

### **B. Palm Beach Country Estates Modeling Update**

- Staff is awaiting receipt of the stage data from the Town of Jupiter in order to complete the calibration
- The Report is undergoing Quality Assurance/Quality Control review with the calibration section pending

## 8. Engineer's Report (5)

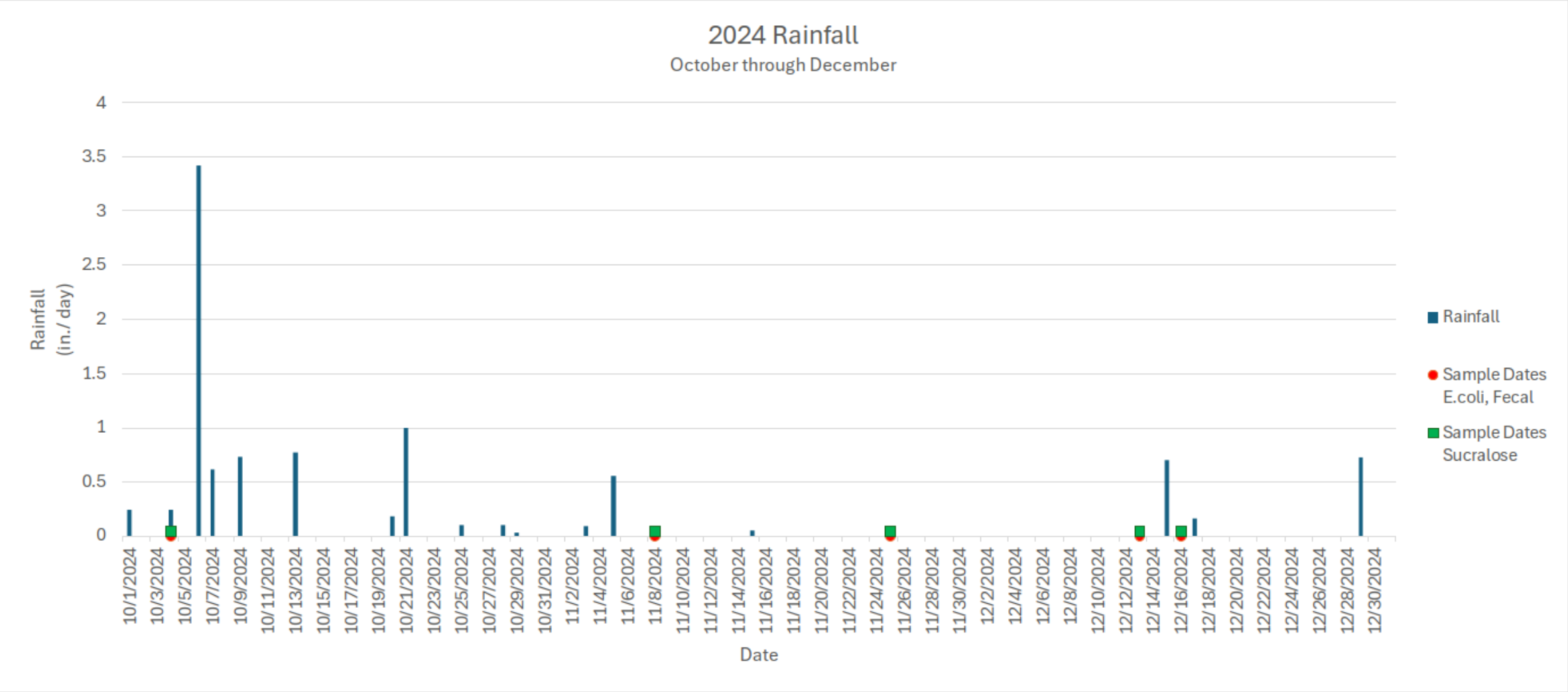
### C. Busch Wildlife Update

- Busch Wildlife Sanctuary is in agreement with the latest plan and has authorized submittal of an Environmental Resource Permit modification to South Florida Water Management District
- Busch Wildlife Sanctuary will submit a permit modification to South Indian River Water Control District for concurrent review

## 8. Engineer's Report (6)

### D. Water Quality Update

# 8. Engineer's Report (7)



# 8. Engineer's Report (8)

## D. Water Quality Update

Sample values

November 8-25

MPN = Most Probable  
Number

CFU = Colony Forming Units

Location	E.Coli (MPN/100mL)	Fecal Coliform (CFU/100mL)	Sucralose (µg/L)
SIRWCD-1	1U	1U	-
SW-1-2	31	105	-
LRECD – Sta. 95	N/A	N/A	-
SW-3	20	55	-
SW-4	85	100	-
SW-5	670	470	0.74
SW-9	20	10U	-
SW-10	379	400	-
SW-14	86	75	-
SW-18	10	4	-
SW-92	10U	3	-
SW-A	10U	4	-
SW-C	10	35	-
SW-D	52	68	0.62
SW-E	74	60	-



## 8. Engineer's Report (9)

### D. Water Quality Update

Sample values

December 13-16

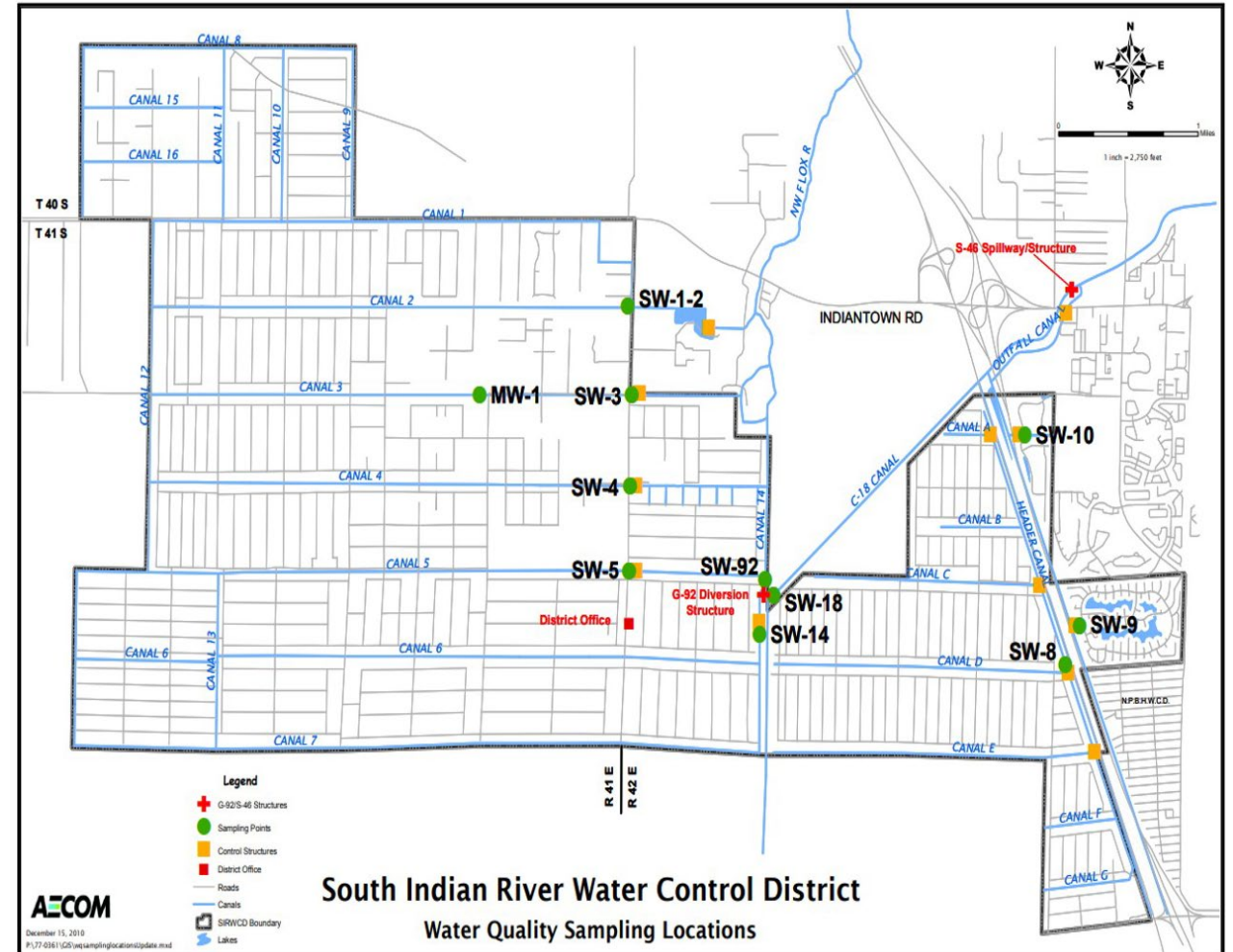
MPN = Most Probable  
Number

CFU = Colony Forming Units

Location	E.Coli (MPN/100mL)	Fecal Coliform (CFU/100mL)	Sucralose (µg/L)
SIRWCD-1	1U	1U	-
SW-1-2	52	40	-
LRECD – Sta. 95	N/A	N/A	-
SW-3	98	42	-
SW-4	74	55	-
SW-5	670	400	0.68
SW-9	30	30	-
SW-10	85	120	-
SW-14	10U	10	-
SW-18	10	2	-
SW-92	20	4	-
SW-A	10	40	-
SW-C	10U	4U	-
SW-D	373	260	0.36
SW-E	41	65	-

# 8. Engineer's Report (10)

## D. Water Quality Update



# 9. Attorney's Report



Presented by  
William G. Capko and Seth Behn  
District Attorneys



# 10. Old Business

# 11. New Business

**A. Board Approval for Recording Secretary Payroll**

**B. Resolution for Employee Retirement Benefits**

# 12. Adjourn





# Aerial of the District

